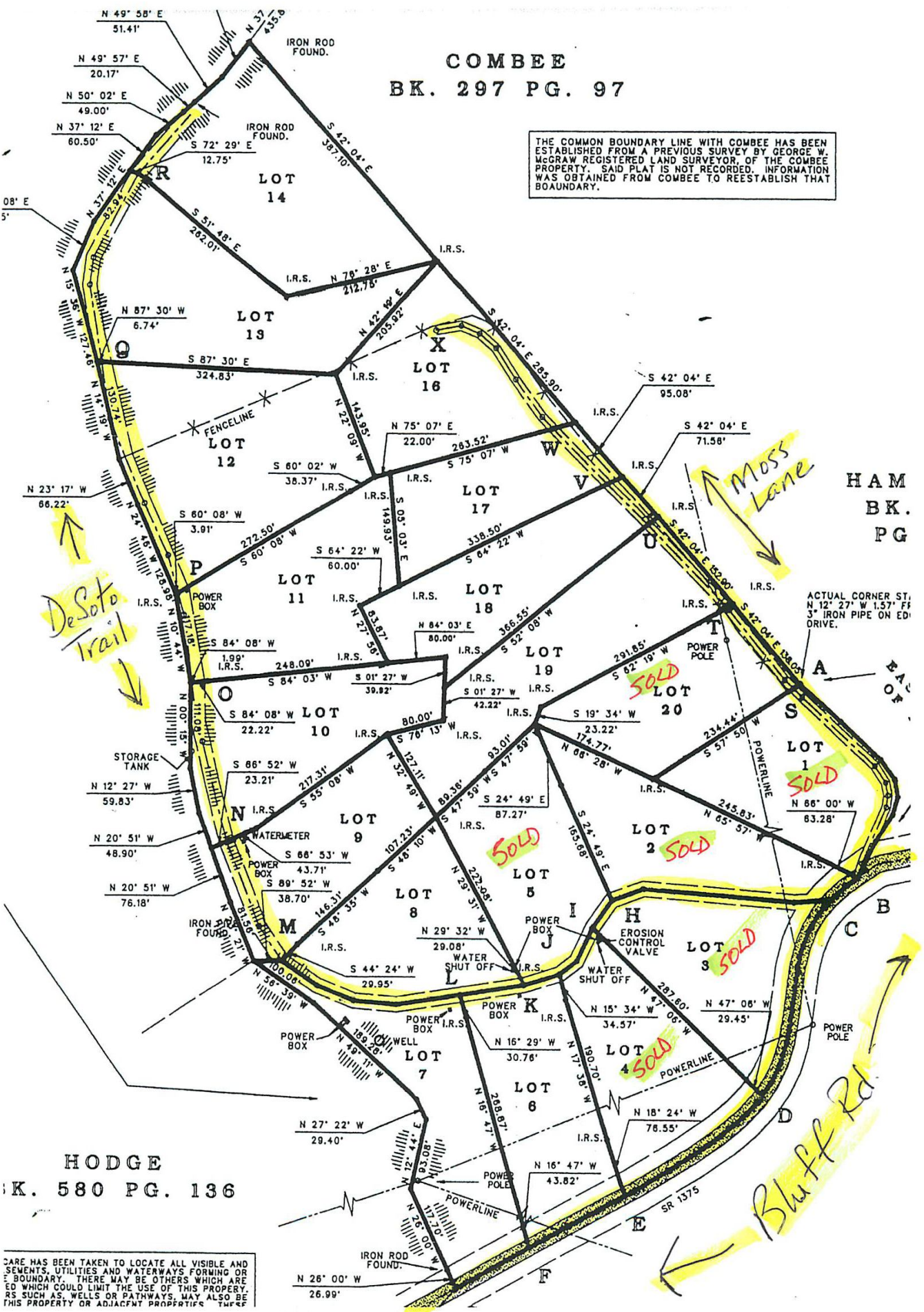


COMBEE  
BK. 297 PG. 97

THE COMMON BOUNDARY LINE WITH COMBEE HAS BEEN ESTABLISHED FROM A PREVIOUS SURVEY BY GEORGE W. MCGRAW REGISTERED LAND SURVEYOR, OF THE COMBEE PROPERTY. SAID PLAT IS NOT RECORDED. INFORMATION WAS OBTAINED FROM COMBEE TO REESTABLISH THAT BOUNDARY.



HODGE  
BK. 580 PG. 136

CARE HAS BEEN TAKEN TO LOCATE ALL VISIBLE AND SEWENTS, UTILITIES AND WATERWAYS FORMING OR BEING BOUNDARY. THERE MAY BE OTHERS WHICH ARE NOT SHOWN WHICH COULD LIMIT THE USE OF THIS PROPERTY. SUCH AS, WELLS OR PATHWAYS, MAY ALSO BE LOCATED ON THIS PROPERTY OR ADJACENT PROPERTIES. THEREFORE, THE SURVEYOR ASSUMES NO LIABILITY FOR SUCH OMISSIONS.